

MRT Jakarta Phase II B (North-South Line)

Background

Project

Phase II of MRT Jakarta is divided into 2, phase II A (Bundaran HI-Jakarta Kota) is currently ongoing and will be followed by phase II B (Jakarta Kota-Ancol).

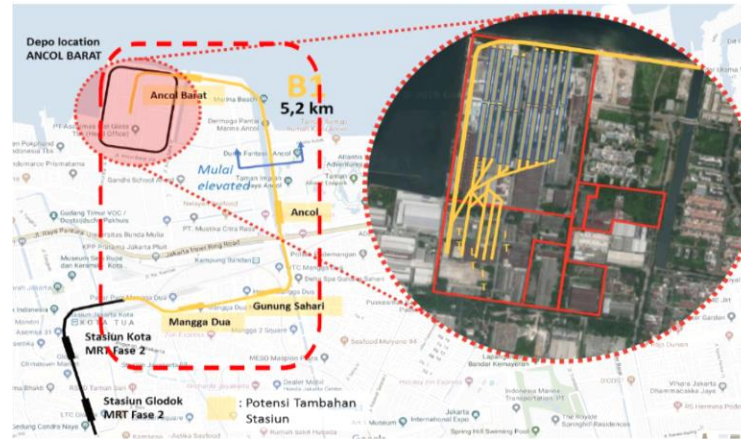
Phase II B contains 3 additional stations and 1 MRT depo facility in Ancol Barat. The route will connect some of Jakarta's iconic places such as Ancol, Kota Tua (Old city) of Jakarta and Mangga Dua shopping center.

Furthermore, the depo facility will be the second depo after the first depo was built in Lebak Bulus (phase I). Following the completion of phase II, MRT Jakarta will serve as integrated public transport system that connect the northern and southern part of Jakarta.

Engagement

Contact

Mr. Nicodemus Winata
Division Head of Business Expansion Division
Email : wnicodemus@jakartamrt.co.id

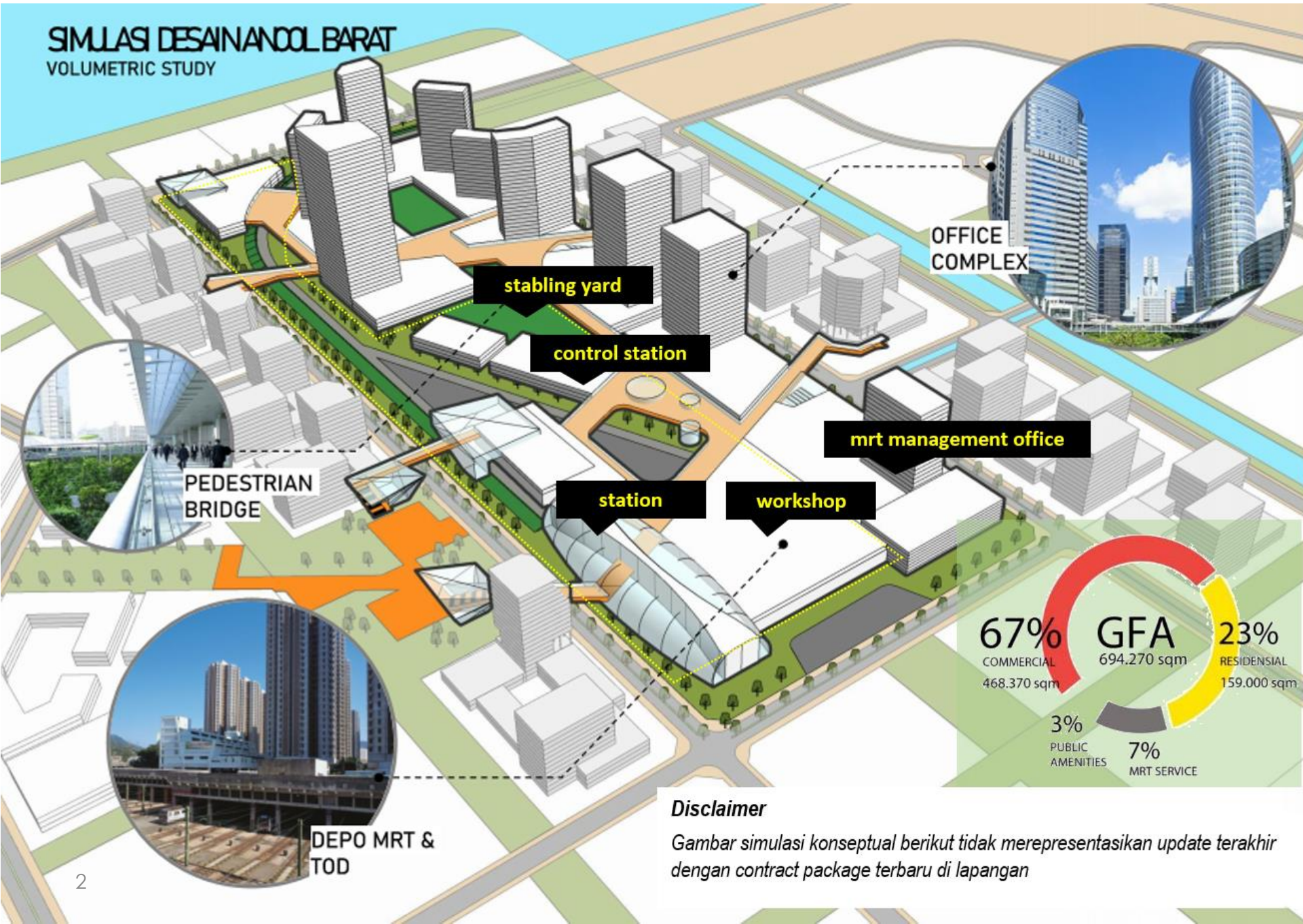


Financial Plan

Project Owner	PT MRT JAKARTA
Total Investment	USD 313 million (phase 2B) USD 110 million (MRT depo)
IRR	Will be informed during the one-on-one session
Payback period	Will be informed during the one-on-one session
Size Land	32 hectares
Status	Feasibility study is available

SIMULASI DESAIN ANCOL BARAT

VOLUMETRIC STUDY



PEDESTRIAN BRIDGE

stabling yard

control station

OFFICE COMPLEX

mrt management office

station

workshop

DEPO MRT & TOD

67%
COMMERCIAL
468.370 sqm

GFA
694.270 sqm

23%
RESIDENSIAL
159.000 sqm

3%
PUBLIC AMENITIES

7%
MRT SERVICE

Disclaimer

Gambar simulasi konseptual berikut tidak merepresentasikan update terakhir dengan contract package terbaru di lapangan

MRT Jakarta Phase III (East-West line)

Background

Project

The East-West Line will connect Eastern and Western Jakarta part, as well as several areas of West Java province. Nonetheless, the Phase III A of MRT Jakarta will only focus on the Jakarta area only, from Kalideres, West Jakarta to Ujung Menteng, East Jakarta.

The construction period for Phase III A will be divided into two stages; stage-1 will cover the Kalideres-Cempaka Baru route (20.1 km) and stage-2 will cover the Cempaka Baru-Ujung Menteng route (11.6 km).

Engagement

Contact

Mr. Nicodemus Winata
Division Head of Business Expansion Division
Email : wnicodemus@jakartamrt.co.id



- Proposed route of phase III, based on feasibility study (2013)

Financial Plan

Project Owner	PT MRT JAKARTA
Total Investment	USD 3,74 billion Stage-1; USD 2.55 billion Stage-2; USD 1.39 billion
IRR	Will be informed during the one-on-one session
Payback period	Will be informed during the one-on-one session
Construction Plan	Stage-1; 20.1 km (9 km underground, 11.1 km elevated track) Stage-2; 11,6 km elevated track
Status	Feasibility study is available

MRT Jakarta East West Line (Phase IV) Fatmawati to Taman Mini Indonesia Indah (TMII)



Background

Project

PT MRT Jakarta is provincially owned corporation under DKI Jakarta Province. It started operation of phase 1 North-South in March 2019. In 2020, it will start phase 2 North-South that will start operating in 2024.

One potential future project is the east-west line (Fatmawati-TMII). It connects the Fatmawati station (included in MRT phase I) to Taman Mini area in East Jakarta through the TB Simatupang road, which is the main business area in South Jakarta.

This East–West extended line will be constructed from Fatmawati to TMII. This line will connect to the new business district in South Jakarta as well as to the line to Bogor and Depok area.

Engagement

Contact

Mr. Nicodemus Winata
Division Head of Business Expansion Division
Email : wnicodemus@jakartamrt.co.id



Financial Plan

Project

USD 1,04 billion

Loan term

40 years

IRR

Will be informed during the one-on-one session

Payback period

Will be informed during the one-on-one session

Construction Plan

10,6 Km

Capital Structure

100% equity annual subsidies

Status

FS is being prepared